

KARIBAN

1/3

REFERENCE : K244

NAME :

SIZES : S_M_L_XL_XXL_3XL

COMPOSITION :

Main fabric : Good carded cotton pique 210 For white color
100%cotton

Main fabric : Good carded cotton pique 220 100%cotton

Main fabric : Good carded Cotton/Viscose pique 90/10 -
220 90%cotton/10%viscose

WEIGHT :

Main fabric : 210 gsm

Main fabric : 220 gsm

Main fabric : 220 gsm

FABRIC CONSTRUCTION AND FINISHING :

Enzyme wash

DESCRIPTION

- Français :** Polo femme manches longues
- English :** Ladies long sleeve pique polo shirt
- Nederlands :** Dames polo met lange mouwen
- Deutsch :** Damen langarm polohemd pique
- Español :** Polo de manga larga para mujer
- Italiano :** Polo pique' donna maniche lunghe
- Português :** Polo de senhora manga comprida

CARE LABEL

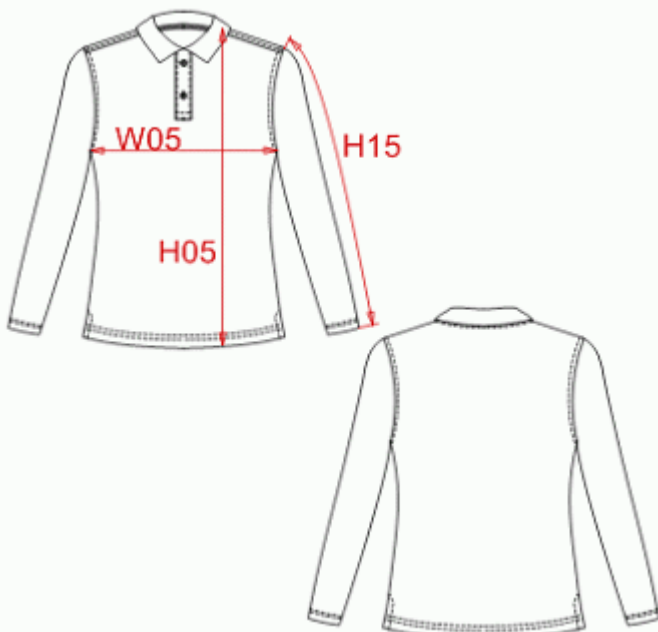


MEASUREMENT

Description	S	M	L	XL	2XL	3XL
H05 Hauteur totale / Total height	63	64,50	66	67,50	69,75	72
W05 1/2 largeur poitrine / 1/2 chest width	46	48	50	52	55	58
H15 Longueur manche / Sleeve length	60	61	62	63	64	65

PACKING

Box	25 pcs / box S => L:50cm W:35cm H:24cm GW:6.50kg NW:5.10kg M => L:50cm W:35cm H:24cm GW:6.90kg NW:5.50kg L => L:52cm W:37cm H:24cm GW:7.40kg NW:5.90kg XL => L:52cm W:37cm H:24cm GW:7.80kg NW:6.30kg XXL => L:54cm W:38cm H:24cm GW:8.30kg NW:6.70kg 3XL => L:58cm W:40cm H:24cm GW:8.80kg NW:7.10kg
-----	---



KARIBAN

REFERENCE : K244

SIZES : S_M_L_XL_XXL_3XL

COMPOSITION :

Main fabric : Good carded cotton pique 210 100%cotton

Main fabric : Good carded cotton pique 220 100%cotton

Main fabric : Good carded Cotton/Viscose pique 90/10 -
220 90%cotton/10%viscose

WEIGHT :

Main fabric : 210 gsm

Main fabric : 220 gsm

Main fabric : 220 gsm

FABRIC CONSTRUCTION AND FINISHING :

Enzyme wash

NAME :

COLORS	PANTONE SERIGRAPHIE
White	White
Black	Black
Navy	2965C
Red	186C
Dark grey	432C
Orange	1585C
Chocolate	439C
Sky blue	7695C
Dark khaki	418C
Tropical blue	633C
Oxford grey	Cool gray 6C
Yellow	123C
Light royal blue	2935C
Kelly green	340C
Fuchsia	7635C
Purple	7447C
Wine	504C
Lime	367C
Forest green	567C